





ATC ATLAS Export

ATC  ATLAS Export allows exporting companies  to manage their export processes automatically and securely in their SAP® system.

ATC :: ATLAS Export stands for automated export processing in SAP®.

Electronic export processing opens up new opportunities for exporters to standardize and automate their foreign trade processes. There's no doubt about



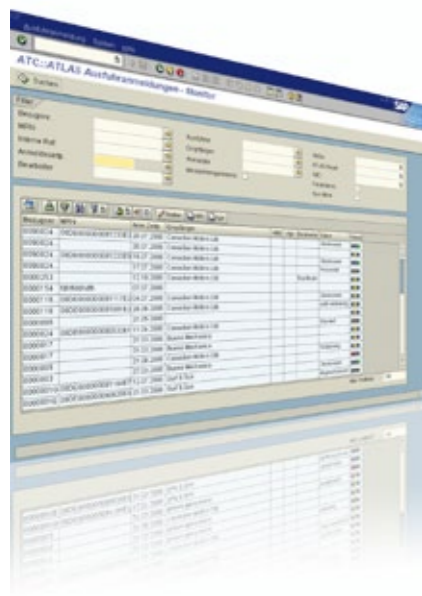
With the export solution designed especially for the SAP® system, AEB offers businesses an application based on future-proof technology that can be

integrated quickly, easily and without the need for any system modifications. ATC :: ATLAS Export offers fully auto-

matized process support: Without any manual intervention, the Export Accompanying Document is printed out and the proof of export is electronically monitored until the endorsement of exit arrives. ATC :: ATLAS Export provides exporting companies with all the functionalities needed to streamline the export process and harness the full potential of highly automated, standardized export processing.

But electronic processing is not just a boon to the authorities who want to monitor and regulate exports more easily. Companies that take the initiative now and harmonize their customs processes can also profit from the shift to the age of electronic customs – from standardized and highly automated processing of their global export business.

Three Components – One System



Three components in ATC :: ATLAS Export take care of data preparation and the secure exchange of messages with the customs office.

The Monitor – central control tool for all exports

Convenient, user-friendly and easy to understand: the Monitor gives the user central access to the overview of all proofs of export and their status. The Monitor supports users in processing their exports; templates and an integrated Assistant help users complete their export declarations. The Monitor allows users to navigate in the familiar SAP® environment and benefit from the user-friendly interface and clear layout in the additional applications that are available.

The Collector – reliably gathering data in the background

The Collector is responsible for gathering the required export data in ATC :: ATLAS Export. ATC :: ATLAS Export imports the ATLAS Export IDoc, thereby linking proven SAP® standard technology with the world of ATLAS. The Collector's convenient user exits and business

add-ins make it easy to compile your individual data. ATC :: ATLAS Export offers you the option of creating templates for recurring transactions. These templates can be selected when the export message is created.

The Agent – a ready helmsman and controller

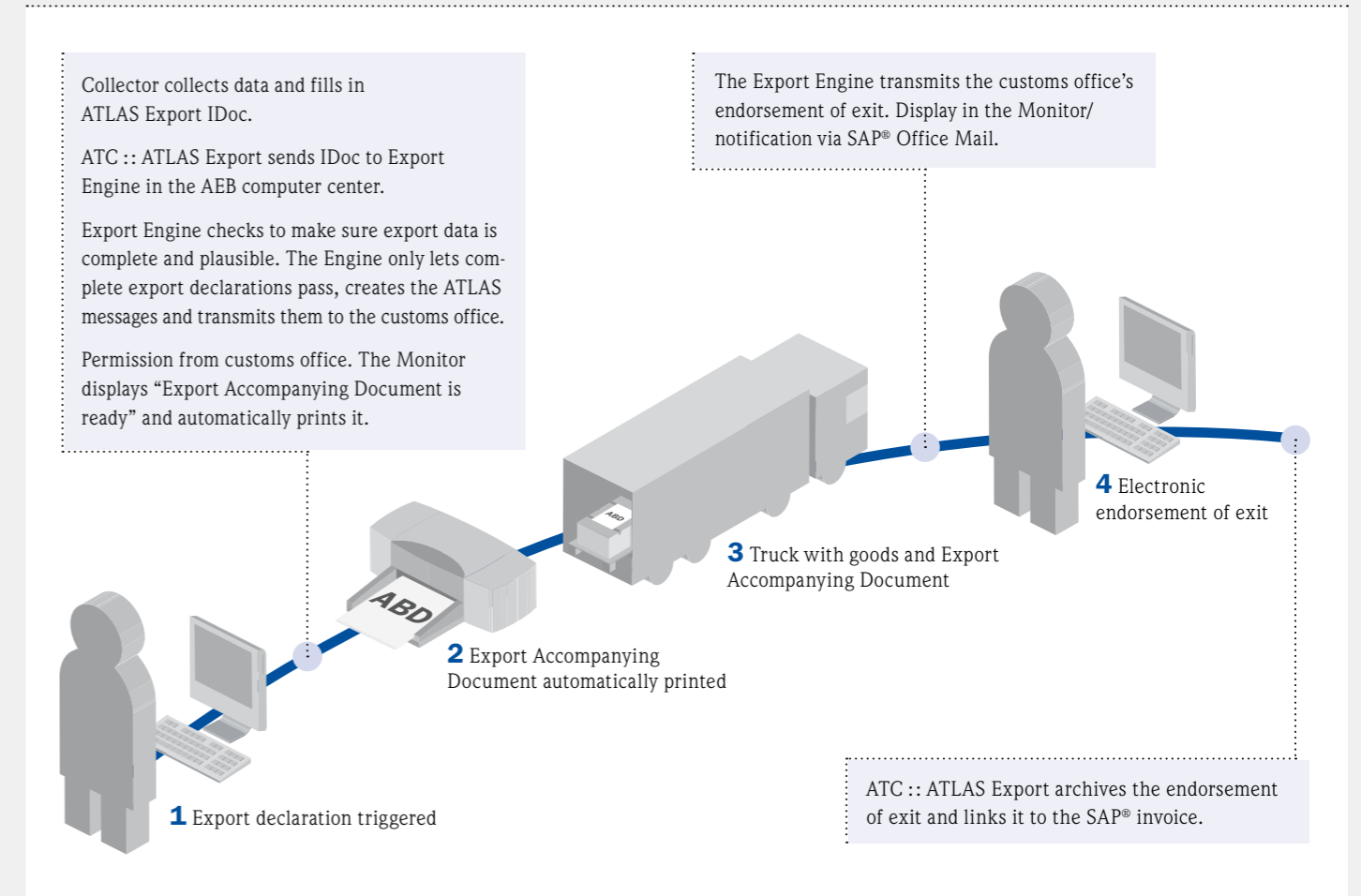
The Agent in ATC :: ATLAS Export pulls the strings in the background to ensure fully automated processing and monitoring. The Agent automatically controls the ATLAS messaging and regularly checks the status of the proof of export. The Agent makes it unnecessary to actively access the Monitor, because the user is notified as soon as manual intervention is required. There is one thing the Agent can't do, however: hand the Export Accompanying Document (ABD) to the truck driver.

ADVANCED
GLOBAL
TRADE
SOLUTIONS

Workflow with ATC :: ATLAS Export

ATC :: ATLAS Export ensures that no incomplete messages are sent to the customs office. It reports any missing or incomplete export data and transmission errors. This ensures that under normal circumstances, the export process proceeds smoothly and without manual intervention. The user only needs to act if an error occurs.

How users experience ATC :: ATLAS Export (steps 1–4) and what goes on inside ATC :: ATLAS Export (blue-shaded boxes):



Export control declaration procedure and AWW § 13

Up to now, many exporters have really only benefited from the simplification of customs procedures when they use the export control declaration procedure set forth in § 13 of the Foreign Trade and Payments Ordinance (AWV). Those who had received this authorization from the customs office didn't have to fill out any export declaration. All they needed was a stamped commercial invoice. Information such as the commodity code, country of origin and weight was not important at the time goods were shipped. Such data only needed to be

reported to Germany's Federal Statistical Office at the end of each month. This "after-the-fact" submission is no longer permitted. All relevant export data must now be reported online to the customs office prior to goods pickup. This means that these companies must adapt their internal workflow to the new requirements. Customs directors, logistics specialists and IT staff should work hand in hand in restructuring the logistical processes. To prevent interruption of the logistics chain when goods are shipped out, it is important that all required data be

available in advance in the SAP® system. Only then can ATC :: ATLAS Export "do its job" and make sure the rest of the export process runs smoothly.

Benefits of ATC ■■ ATLAS Export at a Glance

■■ Cost-effectiveness

ATC :: ATLAS Export uses future-oriented standard software technologies. The plug-in developed especially for integration into SAP® enables fast and efficient processing of export transactions. The use of this business service unleashes the full potential attainable through highly automated and standardized export management.

■■ Automation

ATC :: ATLAS achieves a maximum level of automation in export management. The degree of automation can be defined so that ATC :: ATLAS Export automatically prints the Export Accompanying Document and autonomously controls and monitors the entire process until the electronic proof of export is received.

■■ Process security

The “Pre-Check” looks at orders as soon as they are created and again at defined points to make sure none of the information required for an export declaration is missing or inadequate. This makes it possible, for example, to identify outdated commodity codes and correct them before it's too late, so that the logistical process is not delayed when the message has to be sent to the customs office.

■■ Plug and play

ATC :: ATLAS Export installs without any required system modifications. The only additional application – for monitoring proofs of export – has been adapted to the SAP® user interface and its familiar icons.

■■ SAP® standards

ATC :: ATLAS Export is based on the standard SAP® technologies of the IDoc and user exits. ATC :: ATLAS Export is designed as a Web service and is thus based on the strategy of service-oriented architecture.

■■ Secure data transmission

Multiple databases, encryption through SSL technology and automatic monitoring ensure round-the-clock performance and high-security data transmission from AEB's state-of-the-art computer center to the customs office server.

■■ Easy to use

ATC :: ATLAS Export offers users maximum support for handling exports quickly and securely. The user-friendly interface, the use of templates and an integrated Assistant lend a hand.

Short project runtimes
ATC :: ATLAS Export can be integrated relatively quickly into the existing SAP® system, depending on the complexity of the project.

